

LUMBERJANES™

GOTHAM ACADEMY™

#1 OF 6

BOOM!
BOX™



DC
COMICS™

CLUGSTON FLORES
VALERO-O'CONNELL
GONZALEZ
COGAR



LUMBERJANES™ GOTHAM ACADEMY™



Written by
CHYNNA CLUGSTON FLORES

Pencils by
ROSEMARY VALERO-O'CONNELL

Inks by
MADDI GONZALEZ

Colors by
WHITNEY COGAR

Letters by
WARREN MONTGOMERY

Designer
MICHELLE ANKLEY

BOOM! STUDIOS
Associate Editor
WHITNEY LEOPARD

Editor
DAFNA PLEBAN

DC COMICS
Editor
REBECCA TAYLOR

Cover
MINGJUE HELEN CHEN

Subscription Cover
KELLY & NICHOLE MATTHEWS

Unlocked Retailer Variant Cover
CHYNNA CLUGSTON FLORES

Variant Covers
**LEILA DEL DUCA
KARL KERSCHL**

Newbury Comics Exclusive Cover
BROOKE ALLEN
Colors by **MAARTA LAIHO**

Fried Pie Exclusive Cover
VERONICA FISH

Casablanca Exclusive Cover
MELANIE TINGDAHL

San Diego Comic-Con Exclusive Cover
LISSA TREIMAN

Diamond San Diego Comic-Con Exclusive Cover
CAREY PIETSCH

Collector's Paradise Exclusive Cover
KAT LEYH

Special thanks to Becky Cloonan, Brenden Fletcher, Karl Kerschl and Mark Doyle.

LUMBERJANES Created by Shannon Watters, Grace Ellis, Noelle Stevenson & Brooke Allen

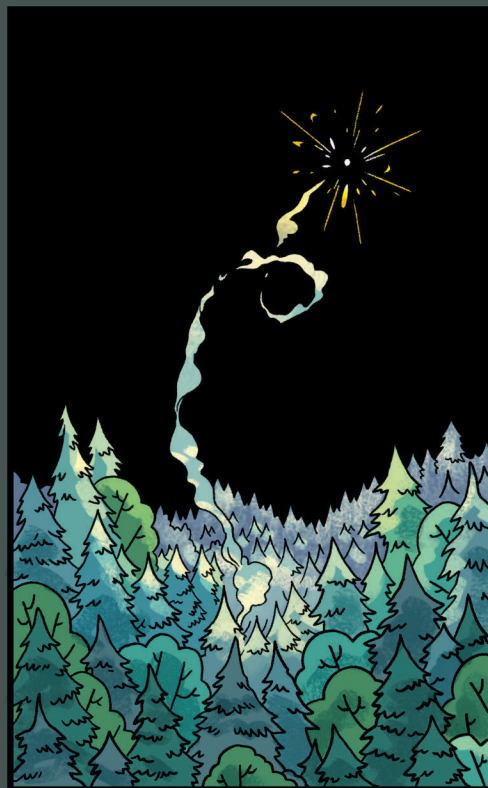
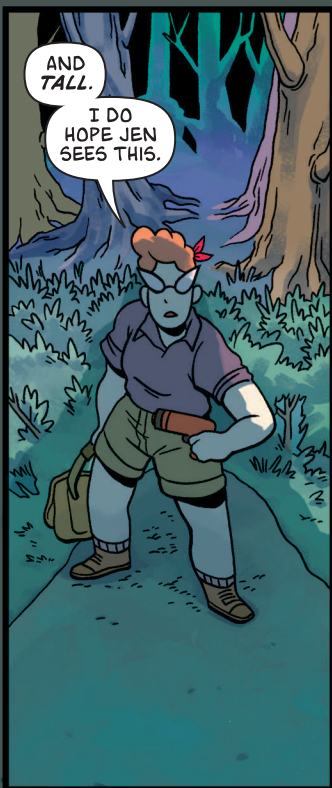
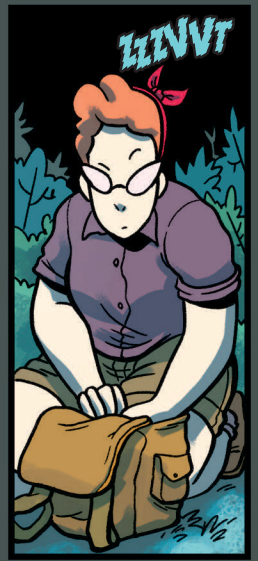
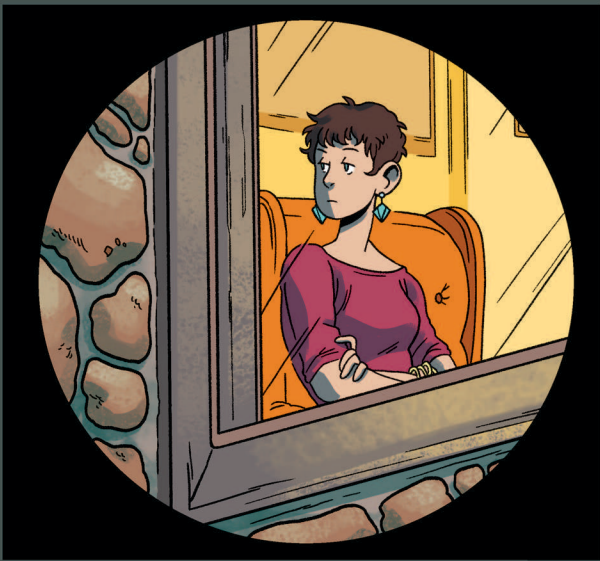
BOOM!
BOX™

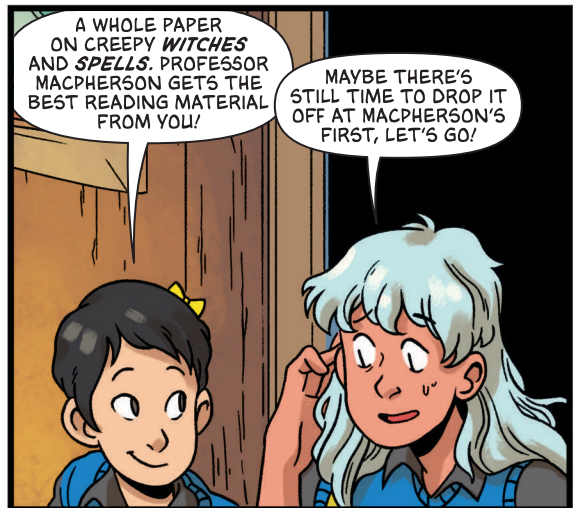
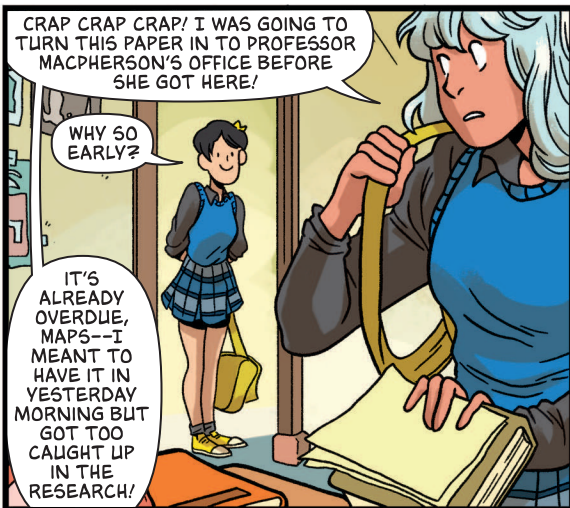
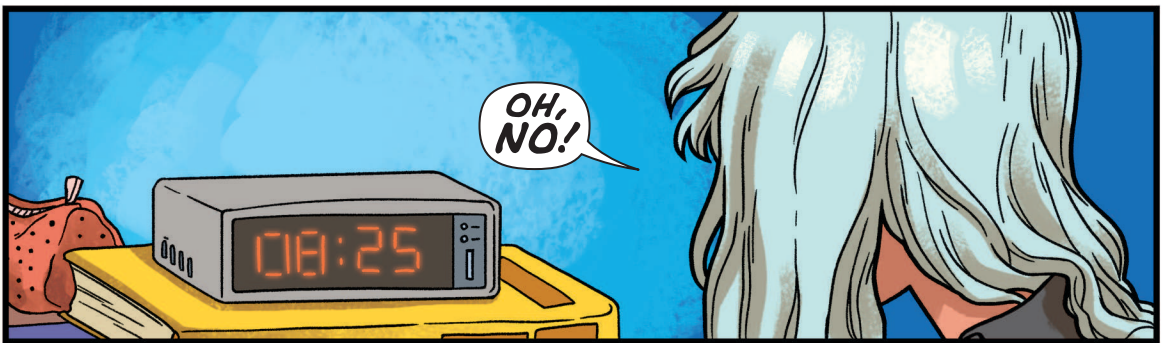
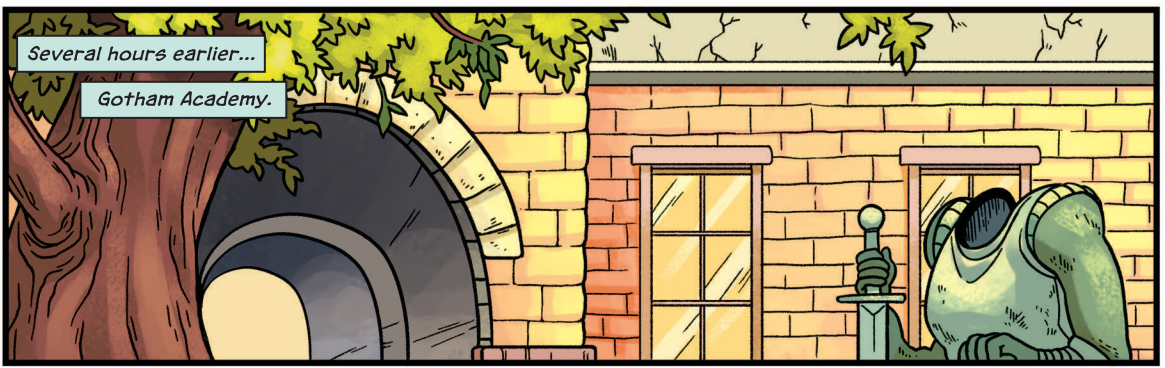
LUMBERJANES/GOTHAM ACADEMY No. 1 (of 6), June 2016. Published by BOOM! Box, a division of Boom Entertainment, Inc., 5670 Wilshire Boulevard, Suite 450, Los Angeles, CA 90036-5679. Lumberjanes/Gotham Academy is © 2016 Boom Entertainment, Inc. and DC Comics. All rights reserved. Lumberjanes is ™ & © 2016 Shannon Watters, Grace Ellis, Noelle Stevenson & Brooke Allen. All rights reserved. GOTHAM ACADEMY, the DC logo, and all related characters and elements are ™ & © DC Comics. All Rights Reserved. BOOM! Box™ and the BOOM! Box logo are trademarks of Boom Entertainment, Inc., registered in various countries and categories. All characters, events, and institutions depicted herein are fictional. Any similarity between any of the names, characters, persons, events, and/or institutions in this publication to actual names, characters, and persons, whether living or dead, events, and/or institutions is unintended and purely coincidental. BOOM! Box does not read or accept unsolicited submissions of ideas, stories, or artwork. For information regarding the CPSIA on this printed material, call: (203) 595-3636 and provide reference #RICH - 681372. PRINTED IN USA.

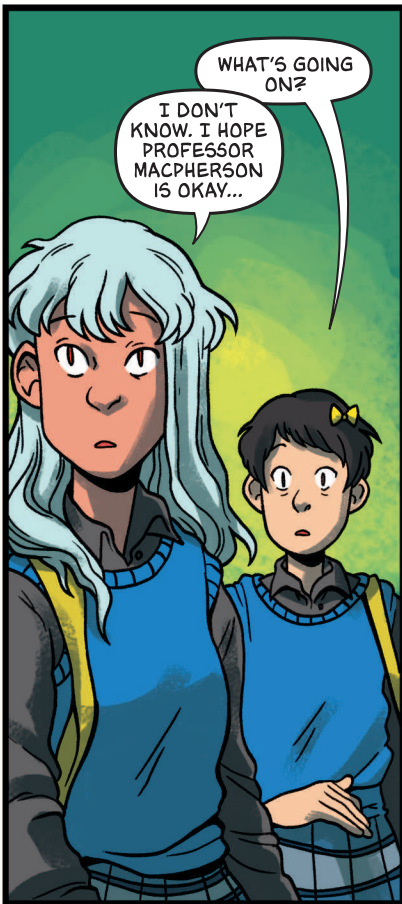
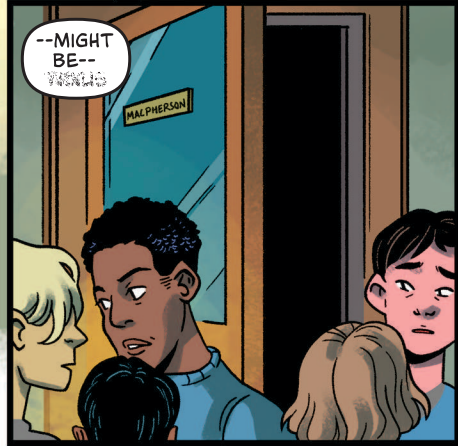

**DC
COMICS™**

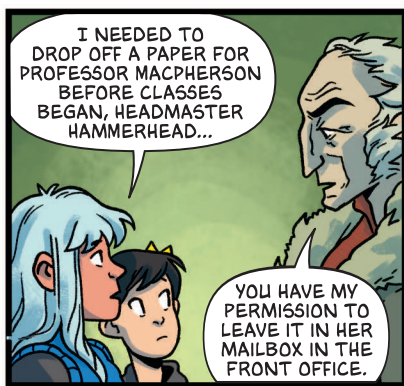
Outside of Miss Qiunzella Thiskwin Penniquiquil Thistle Crumpet's Camp For Hardcore Lady-Types.





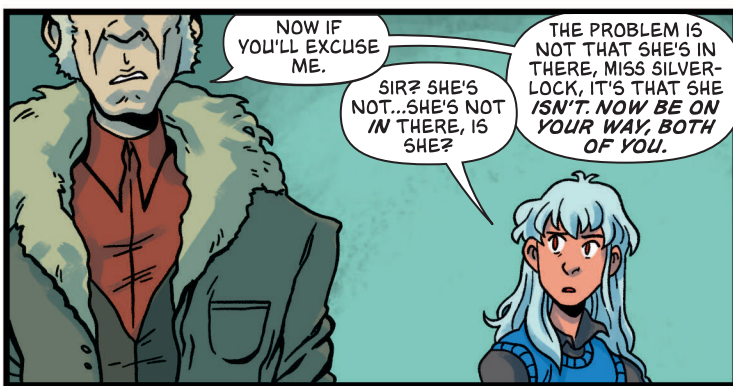






I NEEDED TO DROP OFF A PAPER FOR PROFESSOR MACPHERSON BEFORE CLASSES BEGAN, HEADMASTER HAMMERHEAD...

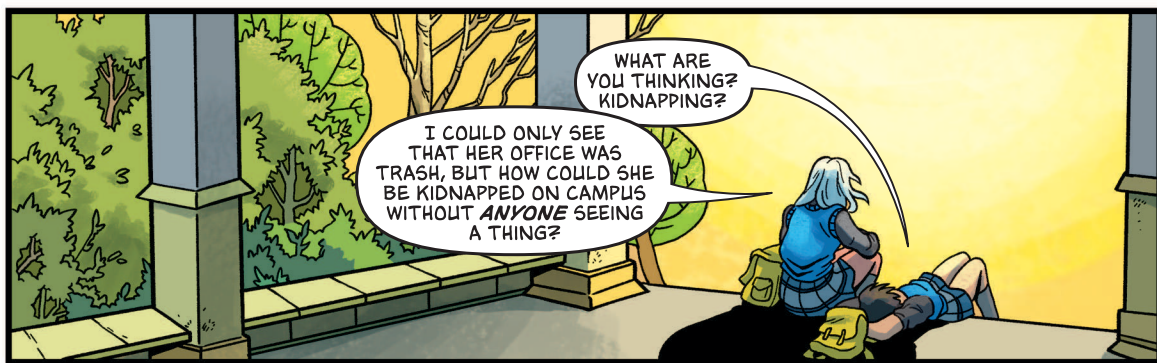
YOU HAVE MY PERMISSION TO LEAVE IT IN HER MAILBOX IN THE FRONT OFFICE.



NOW IF YOU'LL EXCUSE ME.

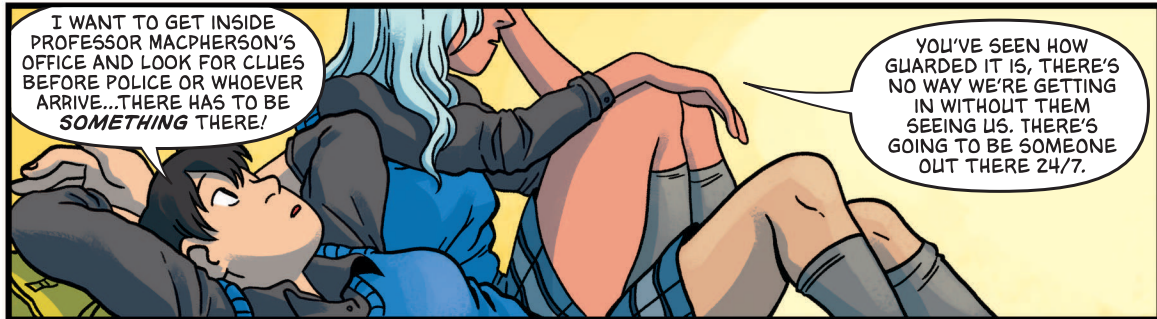
SIR? SHE'S NOT... SHE'S NOT IN THERE, IS SHE?

THE PROBLEM IS NOT THAT SHE'S IN THERE, MISS SILVERLOCK, IT'S THAT SHE ISN'T. NOW BE ON YOUR WAY, BOTH OF YOU.



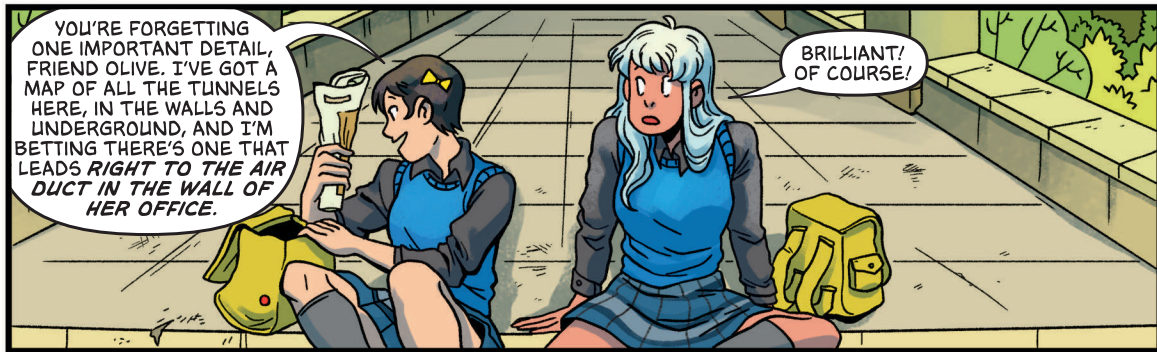
WHAT ARE YOU THINKING? KIDNAPPING?

I COULD ONLY SEE THAT HER OFFICE WAS TRASH, BUT HOW COULD SHE BE KIDNAPPED ON CAMPUS WITHOUT *ANYONE* SEEING A THING?



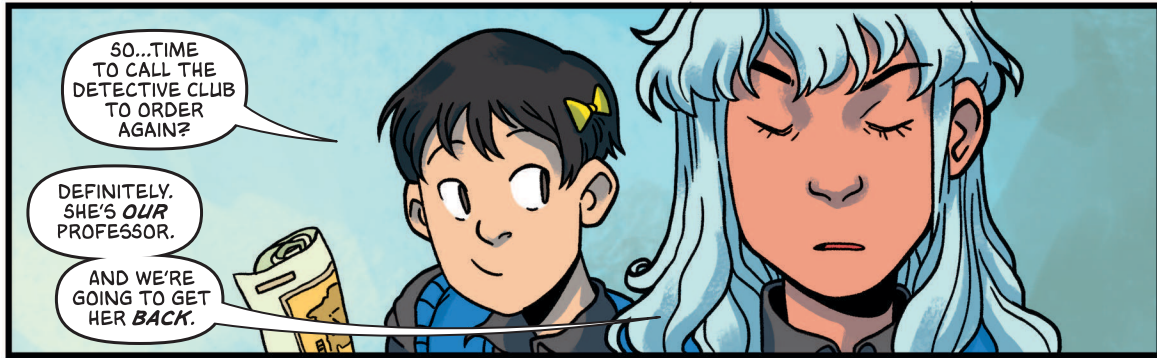
I WANT TO GET INSIDE PROFESSOR MACPHERSON'S OFFICE AND LOOK FOR CLUES BEFORE POLICE OR WHOEVER ARRIVE... THERE HAS TO BE *SOMETHING* THERE!

YOU'VE SEEN HOW GUARDED IT IS, THERE'S NO WAY WE'RE GETTING IN WITHOUT THEM SEEING US. THERE'S GOING TO BE SOMEONE OUT THERE 24/7.



YOU'RE FORGETTING ONE IMPORTANT DETAIL, FRIEND OLIVE. I'VE GOT A MAP OF ALL THE TUNNELS HERE, IN THE WALLS AND UNDERGROUND, AND I'M BETTING THERE'S ONE THAT LEADS *RIGHT* TO THE AIR DUCT IN THE WALL OF HER OFFICE.

BRILLIANT! OF COURSE!



SO... TIME TO CALL THE DETECTIVE CLUB TO ORDER AGAIN?

DEFINITELY. SHE'S *OUR* PROFESSOR.

AND WE'RE GOING TO GET HER *BACK*.



DANG, I'M GOOD. COAST IS CLEAR!

THIS MAY BE THE OLDEST PREP SCHOOL IN GOTHAM BUT DO THE VENTS HAVE TO SMELL THIS BAD?



TRY NOT TO TOUCH EVERYTHING TOO MUCH, GUYS, THEY MIGHT NEED TO DUST FOR PRINTS.

HER STUFF'S ALL HERE. HER PURSE, HER PHONE...

...THE GOOD NEWS IS, I DON'T SEE ANY BLOOD.



THIS IS WEIRD. IT LOOKS MORE LIKE A MINI-TORNADO CAME THROUGH HERE...THERE AREN'T EVEN ANY DRAWERS OPEN, JUST STUFF SCATTERED EVERYWHERE.

NOTHING OF ANY REAL VALUE SHOULD BE MISSING IF HER PURSE AND PHONE ARE STILL THERE, AT LEAST IN THEORY.



DOUBTFUL. THEN AGAIN...

"GOTHAM'S MOST GRUESOME UNSOLVED MYSTERIES... ILLUSTRATED." I LIKE HER TASTE. DO YOU THINK THE PROF WOULD NOTICE IF I BORROWED A BOOK, OR FIVE?



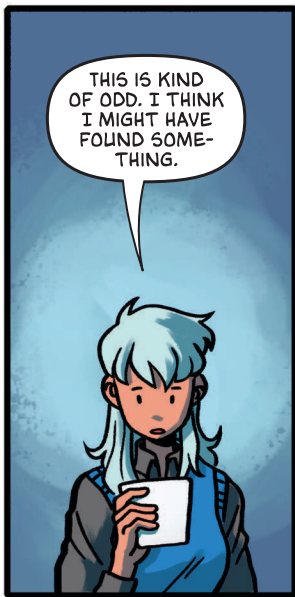
DON'T BE SUCH A GHOUL, POMELINE.

ANYONE OUTSIDE, KYLE?

SPEED IT UP. WE'RE NOT GOING TO BE MUCH HELP TO PROFESSOR MACPHERSON IF WE ALL GET CAUGHT IN HERE.



HMM.



THIS IS KIND OF ODD. I THINK I MIGHT HAVE FOUND SOMETHING.



"YOU ARE CORDIALLY INVITED TO A SPECIAL WEEKEND RETREAT CELEBRATING THE BIRTHDAY OF MISS LOUISE NITHERCOTT-GREENWOOD. THIS FRIDAY, THE 13TH, BLAH BLAH BLAH, 1986 AT GREENWOOD LODGE..."

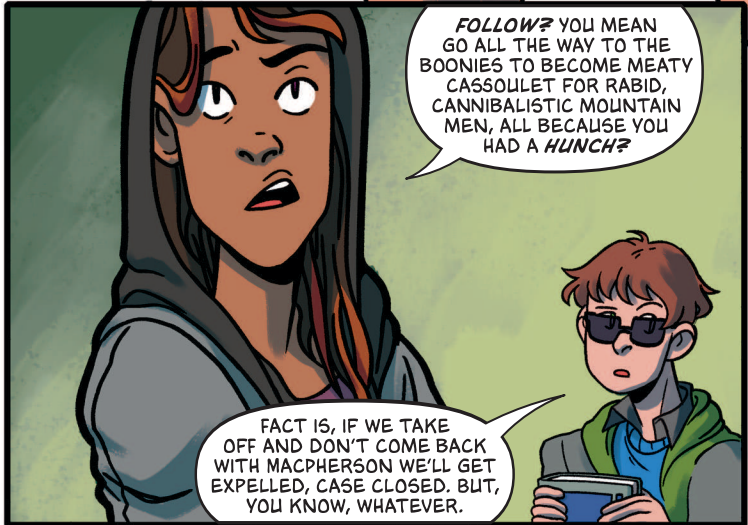
1986? BUT THIS INVITATION LOOKS BRAND NEW.

THAT ADDRESS IS WAY UP IN THE MOUNTAINS, HOURS FROM HERE.

YOU THINK IT'S A THEME PARTY OR SOMETHING?



I DON'T KNOW, BUT I THINK WE SHOULD FOLLOW THIS, IT FEELS LIKE A LEAD. I GET A REALLY CREEPY VIBE OFF IT.



FOLLOW? YOU MEAN GO ALL THE WAY TO THE BOONIES TO BECOME MEATY CASSOLET FOR RABID, CANNIBALISTIC MOUNTAIN MEN, ALL BECAUSE YOU HAD A HUNCH?

FACT IS, IF WE TAKE OFF AND DON'T COME BACK WITH MACPHERSON WE'LL GET EXPELLED, CASE CLOSED. BUT, YOU KNOW, WHATEVER.



COLTON'S RIGHT. I DON'T KNOW, OLIVE. THIS IS SERIOUSLY RISKY AND MIGHT LEAD TO NOTHING BUT US BEING TRANSFERRED OUT OF HERE PERMANENTLY.



PROFESSOR MACPHERSON'S IN DANGER AND I DON'T THINK THE POLICE OR HAMMERHEAD ARE GOING TO BELIEVE US IF WE TELL THEM THEY NEED TO FOLLOW UP ON A THIRTY-YEAR-OLD BIRTHDAY PARTY INVITATION WHEN IT LOOKS LIKE THE CRIME SCENE OF A FILM NOIR IN HERE.

IT'S UP TO US TO HELP HER!



SHH!
HAMMERHEAD
IS COMING--
I'D RECOGNIZE
THAT VOICE
ANYWHERE!



I'LL NEED
YOU TO KEEP A
CLOSE EYE ON THIS.
DETECTIVES SHOULD
BE ARRIVING WITHIN
THE NEXT HOUR
OR SO...

...UNTIL THEN,
THERE MAY BE
CERTAIN STUDENTS
WHO...

GO, GO,
GO!



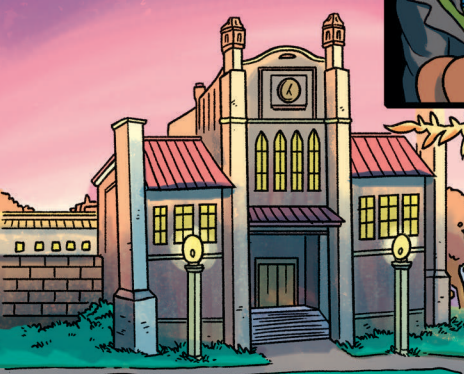
WHEW!
THAT WAS TOO
CLOSE.

WELL,
MACPHERSON
DID LEAVE HER
CAR KEYS.

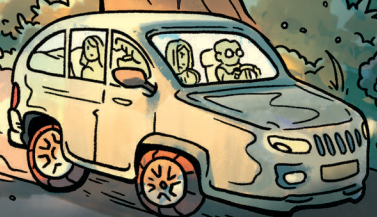
...SO,
ROAD TRIP,
ANYONE?

YOU ALREADY
WRECKED HEADMASTER
HAMMER'S CAR, ARE YOU
GOING TO WORK YOUR WAY
THROUGH THE WHOLE
FLEET OF FACULTY
VEHICLES NOW?

A: IT WASN'T
MY FAULT THE EARTH
OPENED UP AND **ATE** THE
CAR, AND **B:** THIS IS THE
ONLY OPTION. OBVIOUSLY,
THE PROFESSOR'S WHEELS
ARE NOT AS SWEET AS
HAMMERHEAD'S WERE,
BUT BEGGARS CAN'T BE
CHOOSERS...



WE ARE
GONNA BE SO
BUSTED.





WHAT AM I SUPPOSED TO DO? I CAN'T JUST DRAG THEM INTO THIS, WHATEVER IT IS! I'M HERE TO PROTECT THEM, NOT PUT THEM IN HARM'S WAY!



...BUT I CAN'T DO THIS ALONE, EITHER! I KNOW I CAN'T WASTE ANY MORE TIME, BUT I DON'T KNOW WHAT WE'D BE GETTING INTO.

WHAT AM I EVEN LOOKING AT?



UGH, I DON'T KNOW WHAT I'M LOOKING FOR!

ARRRRRRRRGH!

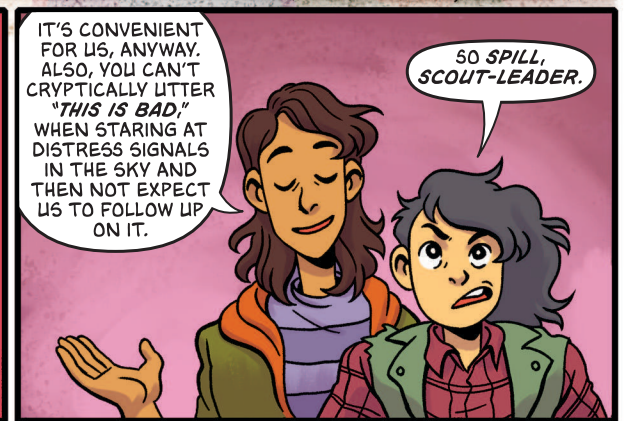


SO, ARE YOU GOING TO TELL US WHAT'S UP, OR JUST SCREAM LIKE AN ANGRY PIRATE?



OH, OF COURSE YOU'RE STANDING THERE, BECAUSE WHY WOULDN'T YOU BE?

WHEN WILL I LEARN TO INNER MONOLOGUE?!



IT'S CONVENIENT FOR US, ANYWAY. ALSO, YOU CAN'T CRYPTICALLY UTTER "THIS IS BAD," WHEN STARING AT DISTRESS SIGNALS IN THE SKY AND THEN NOT EXPECT US TO FOLLOW UP ON IT.

SO SPILL, SCOUT-LEADER.



THAT DISTRESS SIGNAL... IT WAS *ROSIE*. I FIGURE YOU NOTICED SHE'S NOT HERE.



AND SO YOU REALIZE, IF IT'S ROSIE--OF ALL PEOPLE--IT'S GOT TO BE, LIKE I SAID, BAD.

SHE'S NOT EXACTLY HELPLESS, AS WE ALL KNOW.

BUT YOU HAVE NO IDEA WHAT THE DISTRESS SIGNAL MIGHT HAVE BEEN ABOUT?



NOT A CLUE.

...AND THIS *MOUNTAIN OF WEIRD* ISN'T HELPING!

OOOOH



...THEN I SAW THE FLARE.

THE ONLY THING I'M FINDING IS PICTURES OF SOME OLD CABIN.



SO WHY DID YOU WAIT TO TELL US?



YOU *KNOW* WHY! I CAN'T ALLOW ANYTHING BAD TO HAPPEN TO YOU GUYS. I *HAVE* TO THINK OF YOUR SAFETY. I WAS TRYING TO THINK OF A WAY TO HELP ROSIE AND NOT PUT ANY OF YOU IN *POTENTIAL DANGER*.



SO WHAT'S A LITTLE DANGER?

WE LIKE DANGER.

YEAH, WE'RE ALL FOR IT.

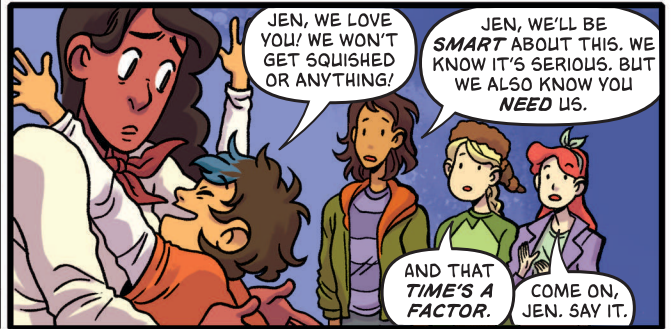
WITHIN REASON. I WON'T JUMP IN AN ACTIVE VOLCANO OR...

YOU'D JUMP IN A VOLCANO TO RESCUE ROSIE.



OKAY, YOU'RE RIGHT. BUT I DRAW THE LINE AT VOLCANOES... AND OUTER SPACE, CILANTRO, OR THE MARIANA TRENCH.

THAT'S THE PROBLEM! YOU DON'T REALIZE HOW PERILOUS SOME OF THESE ADVENTURES YOU RUSH INTO REALLY ARE!



JEN, WE LOVE YOU! WE WON'T GET SQUISHED OR ANYTHING!

JEN, WE'LL BE SMART ABOUT THIS. WE KNOW IT'S SERIOUS. BUT WE ALSO KNOW YOU NEED US.

AND THAT TIME'S A FACTOR.

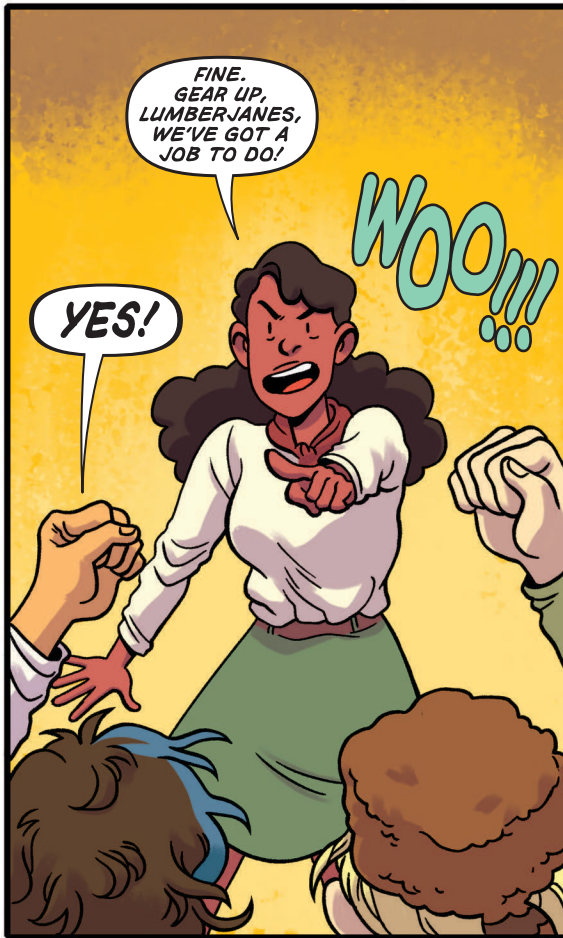
COME ON, JEN. SAY IT.



SIGH. I DON'T KNOW...



YOU KNOW WHAT NEEDS TO BE DONE. SAY IT. SAAAAAAAAY IT.




FINE. GEAR UP, LUMBERJANES, WE'VE GOT A JOB TO DO!

YES!

WOO!!!



WE'RE COMING TO GET YOU, ROSIE!



I CAN'T BELIEVE NOBODY BROUGHT ANYTHING TO EAT.

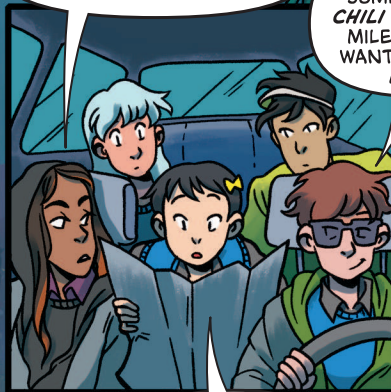
WHAT ARE YOU TALKING ABOUT? MACPHERSON LEFT TWIGLETS AND JAFFA CAKES IN THE GLOVE BOX.

I HAVE AN ALLERGY TO BRITISH SNACKS WITH STUPID NAMES.

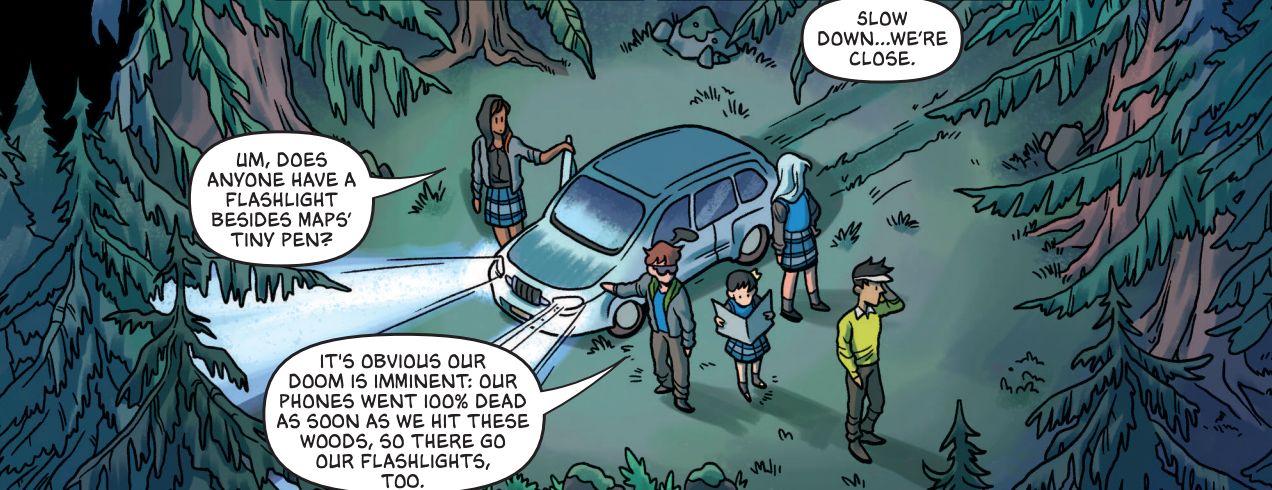
YES--MUNCHIES, TWINKIES, AND HO HOS HAVE A CERTAIN *DIGNITY* TO THEIRS TO WHICH THE BRITS COULDN'T *POSSIBLY* COMPARE.

POINT BEING WE JUST ZIPPED UP HERE, AND WITH THE EXCEPTION OF SOME CONVENIENCE STORE NACHOS, WE HAVEN'T EVEN THOUGHT ABOUT PROVISIONS. WHAT ARE WE GOING TO EAT?

WELL, I SAW SOME *ROAD KILL CHILI* CANDIDATES A MILE BACK IF YOU WANT ME TO TURN AROUND.



SLOW DOWN...WE'RE CLOSE.



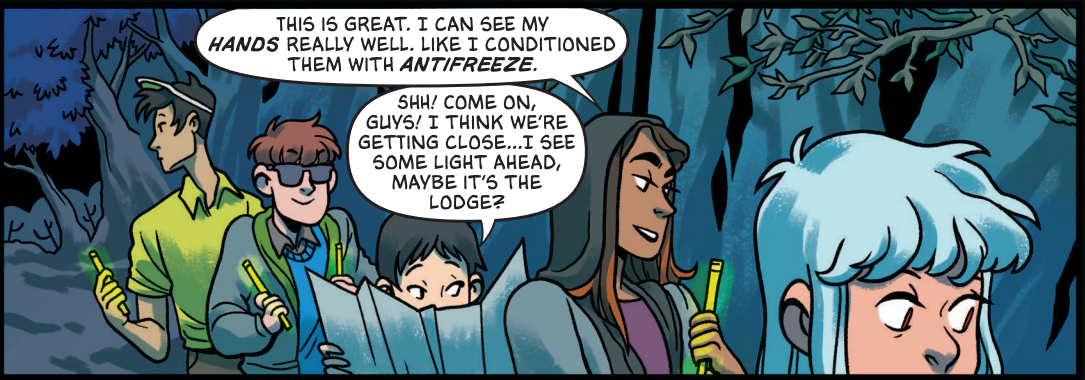
UM, DOES ANYONE HAVE A FLASHLIGHT BESIDES MAPS' TINY PEN?

IT'S OBVIOUS OUR DOOM IS IMMINENT: OUR PHONES WENT 100% DEAD AS SOON AS WE HIT THESE WOODS, SO THERE GO OUR FLASHLIGHTS, TOO.

BUT I HAVE A TON OF THESE! IF I HOLD THEM CLOSE TO THE GROUND I CAN SEE ABOUT TEN INCHES AHEAD.

YEAH, NOT EXACTLY WHAT I HAD IN MIND.

LET'S TAKE THIS TRAIL--WE SHOULD STAY OFF THE ROAD JUST IN CASE SOMEONE COMES ALONG. THE FOREST MAP INDICATES IT SHOULD LEAD STRAIGHT UP TO THE LODGE!



THIS IS GREAT. I CAN SEE MY HANDS REALLY WELL. LIKE I CONDITIONED THEM WITH ANTIFREEZE.

SHH! COME ON, GUYS! I THINK WE'RE GETTING CLOSE...I SEE SOME LIGHT AHEAD, MAYBE IT'S THE LODGE?



I THOUGHT I SAW SOME LIGHT, TOO. NOW I DON'T SEE ANYTHING AT ALL. ARE YOU SURE WE'RE NOT LOST?

I THOUGHT THE MAP WAS UP-TO-DATE, BUT...

RUSTLE



STOP, STOP! I JUST HEARD SOMETHING!



HEY, PUT OUT THOSE GLOWSTICKS!

YOU MIGHT ACCIDENTALLY START AN ILLEGAL DANCE PARTY.

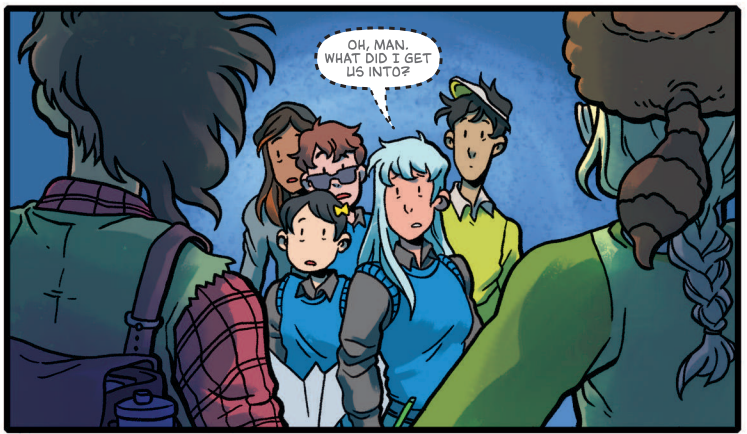


KLIK KLIK KLIK

...AND I WON'T TECHNO FOR AN ANSWER.



REMEMBER-- ONLY YOU CAN PREVENT FOREST RAVES.



SORRY IF WE STARTLED YOU! WE DIDN'T EXPECT TO RUN INTO ANYONE ELSE OUT HERE, EITHER. NOT OUR AGE, ANYWAY. NOT HUMAN.

COME AGAIN?

I'M APRIL, A.K.A. THE PLUNGEON MASTER. THIS IS JO NEXT TO ME.

HI.



THE ONE THAT JUST JUMPED OUT OF THE TREE LIKE A FLYING SQUIRREL IS RIPLEY, AND THAT'S MAL AND MOLLY BEHIND YOU. WE'RE LUMBERJANE SCOUTS.

HEY.

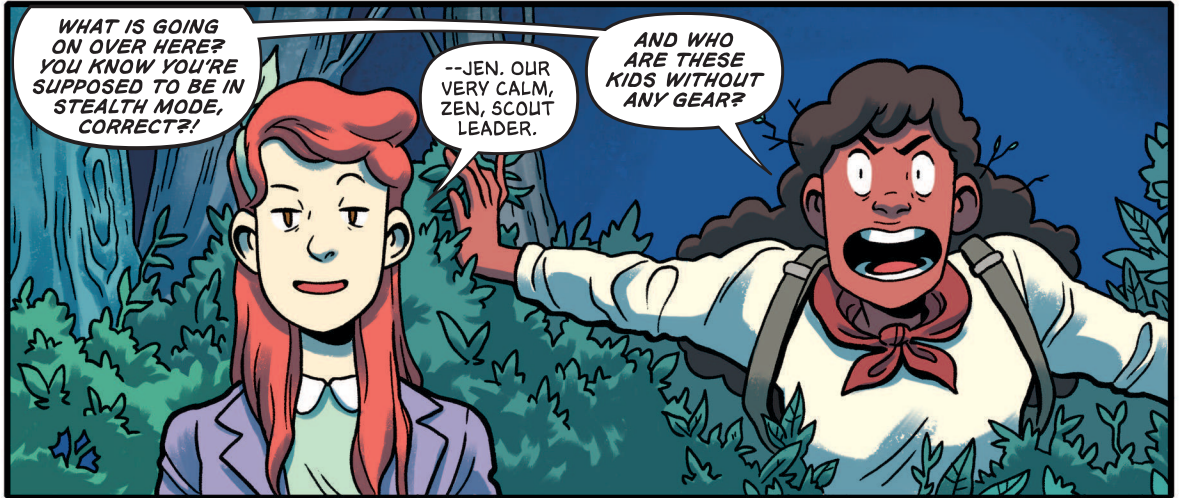
HI. UH, I'M OLIVE...



...THIS IS MAPS, KYLE, POMELINE, AND COLTON. WE'RE STUDENTS AT GOTHAM ACADEMY.

YOU HAD US WORRIED, WE DIDN'T KNOW WHETHER WE LANDED ON THE SET OF MEATBALLS OR CAMP CRYSTAL LAKE.

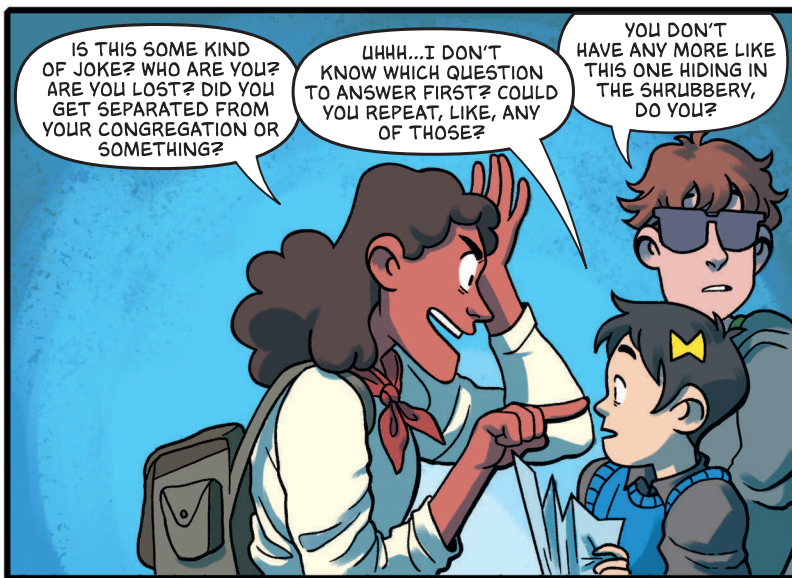
DON'T RELAX JUST YET, YOU HAVEN'T MET--



WHAT IS GOING ON OVER HERE? YOU KNOW YOU'RE SUPPOSE TO BE IN STEALTH MODE, CORRECT?!

--JEN. OUR VERY CALM, ZEN, SCOUT LEADER.

AND WHO ARE THESE KIDS WITHOUT ANY GEAR?



IS THIS SOME KIND OF JOKE? WHO ARE YOU? ARE YOU LOST? DID YOU GET SEPARATED FROM YOUR CONGREGATION OR SOMETHING?

UHHH...I DON'T KNOW WHICH QUESTION TO ANSWER FIRST? COULD YOU REPEAT, LIKE, ANY OF THOSE?

YOU DON'T HAVE ANY MORE LIKE THIS ONE HIDING IN THE SHRUBBERY, DO YOU?



WHERE ARE YOU FROM? AND WHAT'S WITH THE UNIFORMS? HOW DID YOU GET HERE--YOU'RE LIKE HALF A STATE AWAY FROM ANY PRIVATE SCHOOL!

YOU GOT US, DETECTIVE. WE'RE ACTUALLY IN A KUNG-FU STREET GANG MASTERMIND BY QUENTIN TARANTINO.



THAT'S IT, WE'RE DONE. I HATE TO DELAY THIS BUT ROSIE WOULD WANT THESE KIDS IN THE SAFETY OF THE CAMP. THEY'RE UNPREPARED TO BE NEAR *UNMOWN GRASS*. LET ALONE IN THIS *CRAZY FOREST*.

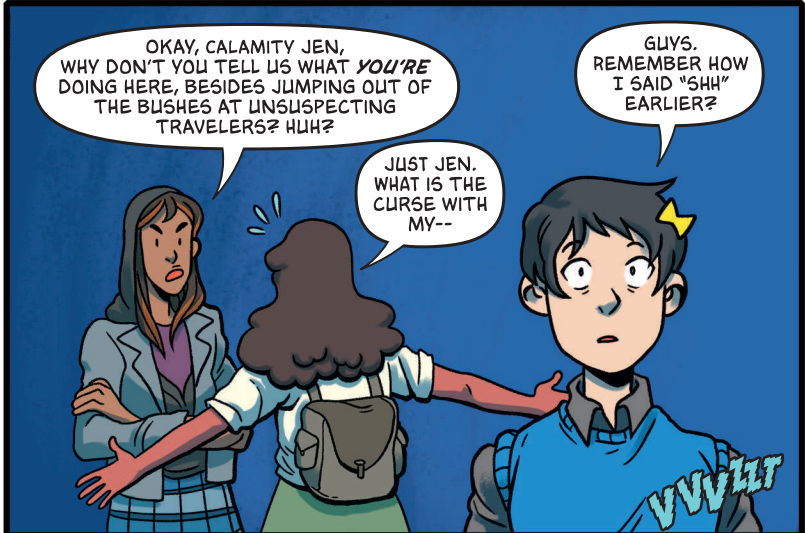
WHOA, WHOA, WHOA! WE'RE NOT GOING TO SOME RANDO CAMP, *MOM*. WE HAVE SOMEONE TO RESCUE HERE, AND THAT'S WHAT WE'RE GOING TO DO.

"*MOM*"?! I'M STILL IN HIGH SCHOOL!



HEY, I DON'T LET LIPPY *UPPERCLASSMEN* AT GOTHAM ACADEMY BOSS ME AROUND, SO I'M NOT GOING TO LET SOME CAMP-COUNSELING *CALAMITY JANE*--

JEN!



OKAY, CALAMITY JEN, WHY DON'T YOU TELL US WHAT *YOU'RE* DOING HERE, BESIDES JUMPING OUT OF THE BUSHES AT UNSUSPECTING TRAVELERS? HUH?

GUYS. REMEMBER HOW I SAID "*SHH*" EARLIER?

JUST JEN. WHAT IS THE CURSE WITH MY--



GUYS!

WHAT!

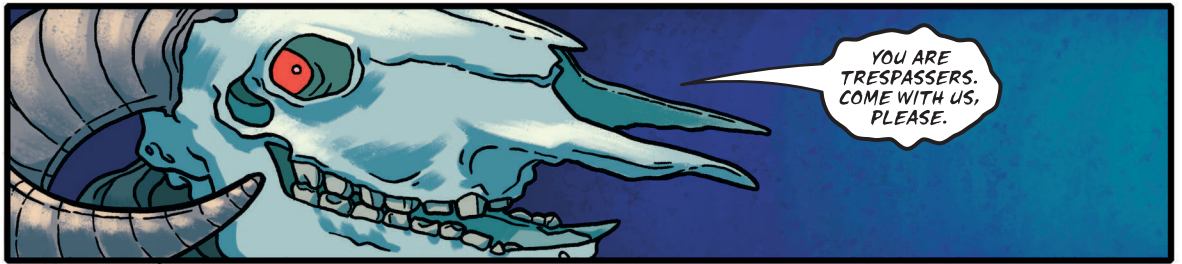
...OH.



ALL THAT NOISE YOU WERE MAKING ATTRACTED SOME...UH, VISITORS.

VVVLT

VVVVVTTT



YOU ARE TRESPASSERS. COME WITH US, PLEASE.



OHHHHHHHH... YEAH, NO.

SECONDED.

GRRRRR

THAT MOP ON YOUR HEAD IS ALIVE?



WE NEED TO FIND PROFESSOR MACPHERSON, WE HAVE TO MAKE A RUN FOR IT!

AND GO WHERE?

YOU'LL COME WITH US.



WE AWAIT YOUR COMPLIANCE.

LUMBERJANES, I WANT YOU TO USE **THE BUDDY SYSTEM** WITH OUR NEW FRIENDS HERE--GRAB WHOEVER'S CLOSEST TO YOU. YOU KNOW WHAT TO DO.



I EXPECT YOU ALL TO UPHOLD THE SCOUT PLEDGE, AS ALWAYS, NO MATTER WHAT.

DO I HAVE YOUR WORD?

WE SOLEMNLY SWEAR.

NOW...

WHAT IS SHE TALKING ABOUT?



RUN!!!

VVVVTTTT

VVVVZZZT

VVVVTTTT



WHERE'S THE PROPERTY LINE?!

I THINK IT'S THE RIVER, WHY??

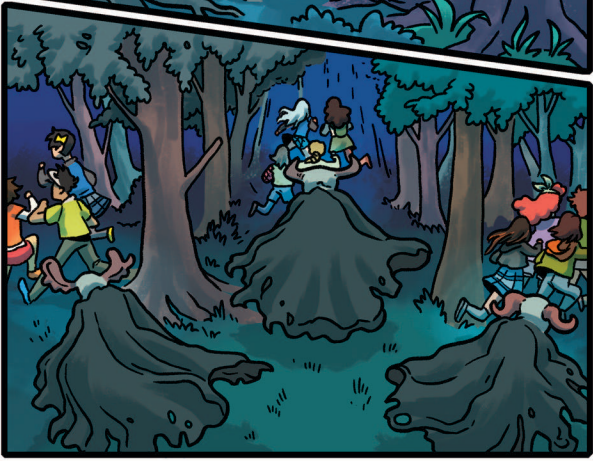
THAT CREATURE CALLED US *TRESPASSERS*... MAYBE IF WE MAKE IT ACROSS THE PROPERTY LINE, IT WON'T FOLLOW US BEYOND IT!

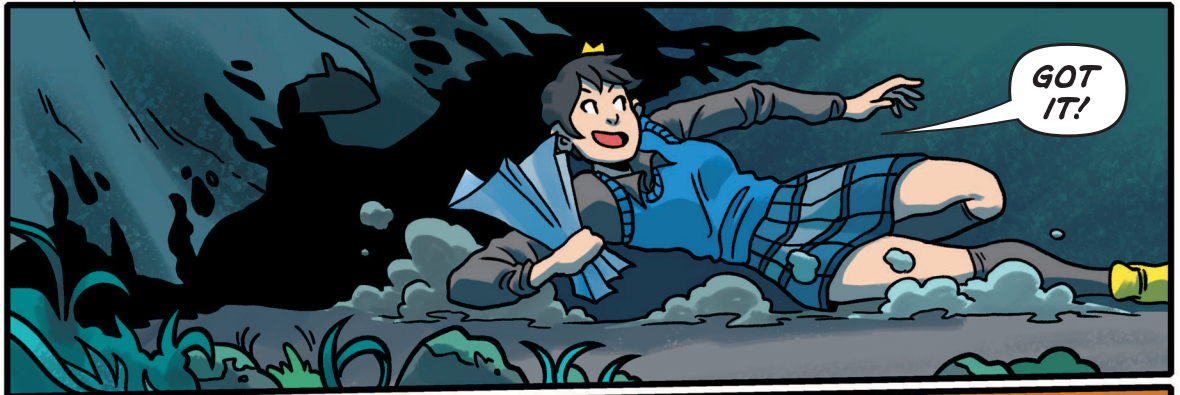
YOU'RE MORE OPTIMISTIC THAN I AM! I WON'T STOP RUNNING UNTIL I MAKE IT TO THE STATE LINE!

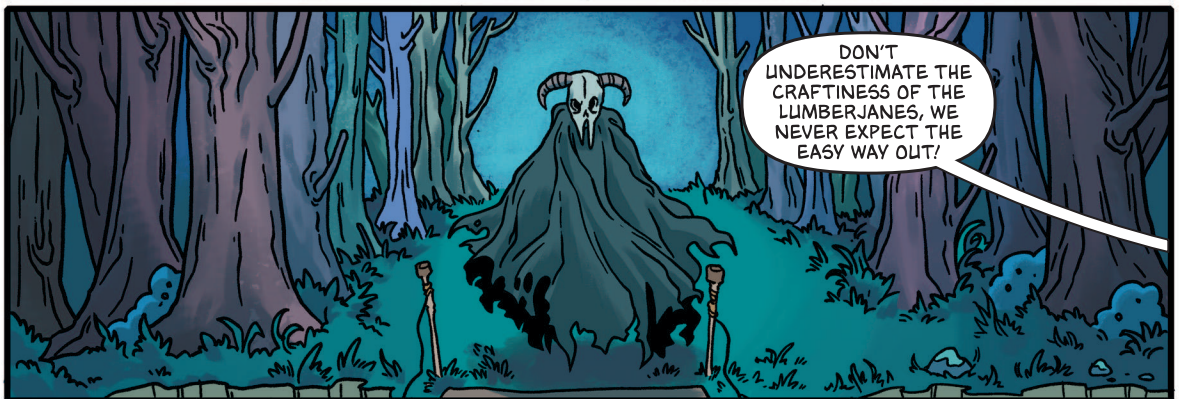
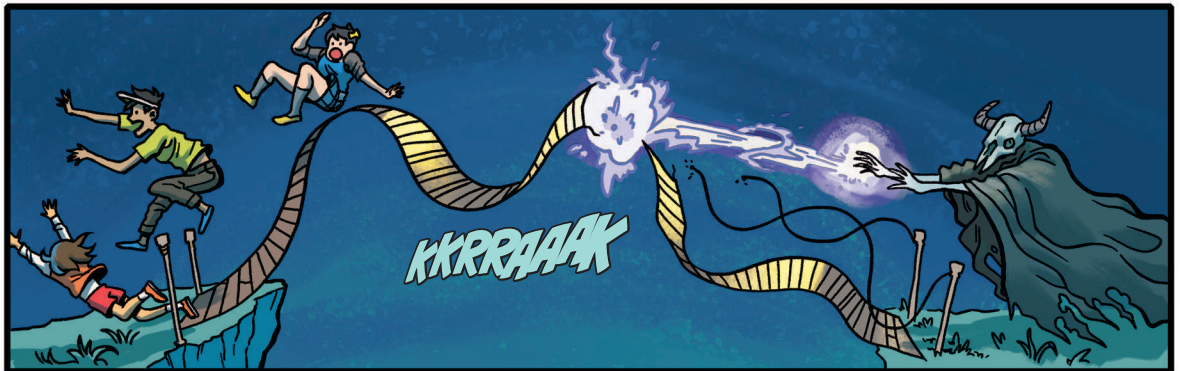
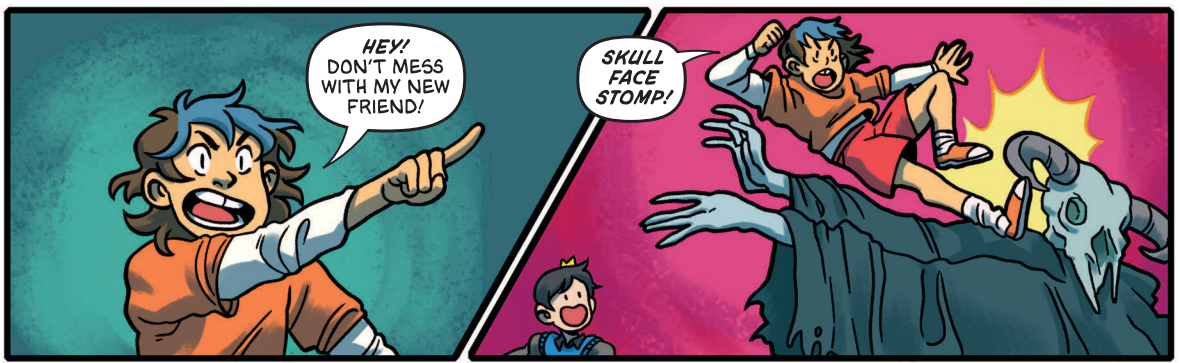


GOOD CALL, RAVENCLAW! EVERYONE DO WHATEVER YOU CAN TO GET ACROSS THE RIVER--

--NOW, **SPLIT!**





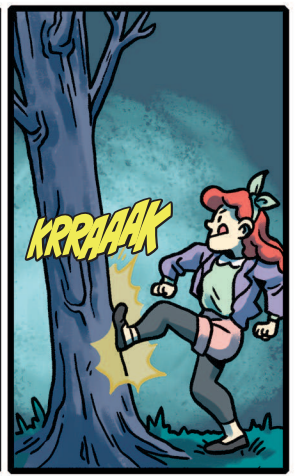




LOOK!



VZZZZ



KRRRAAK



FOOOM!

WHOA! CRAFTY, INDEED. SO THAT LEAVES...



I LOVE MY JOB! I LOVE MY JOB! I LOVE MY JOB! I LOVE MY JOB!

SHAAAHE SHAAAHE ...IT'S GAINING ON US!



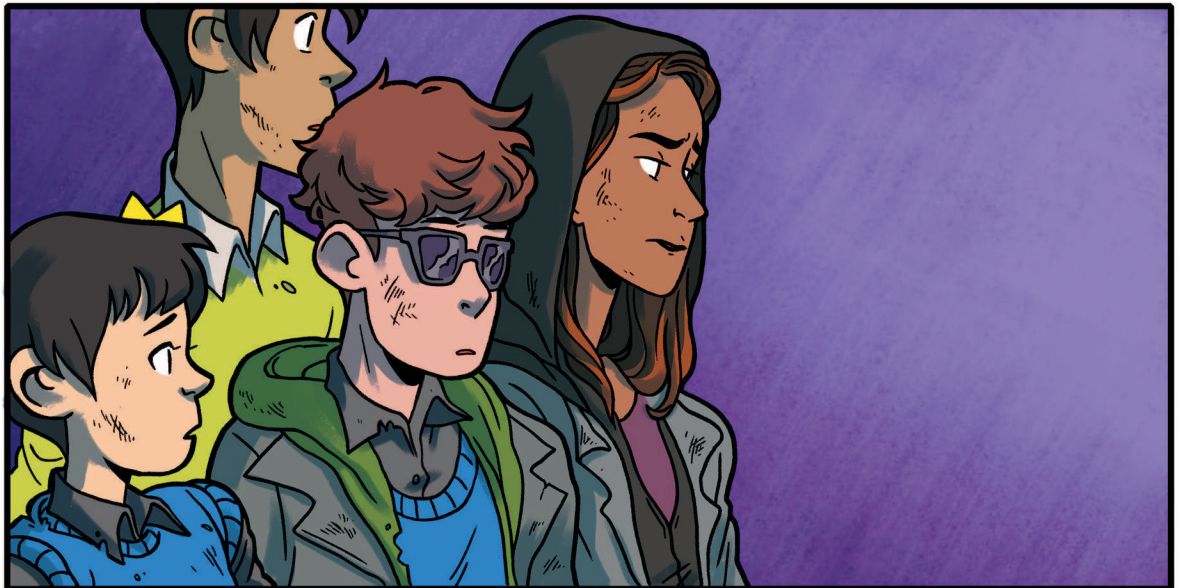
FSHAAAANK



I'VE GOT TO BUY THEM MORE TIME TO GET TO THE RIVER.

OR NONE OF US WILL MAKE IT!





to be continued...

A PEEK BEHIND THE CURTAINS OF THE NEWEST BOOM! BOX™ ORIGINAL SERIES

THE BACKSTAGERS™



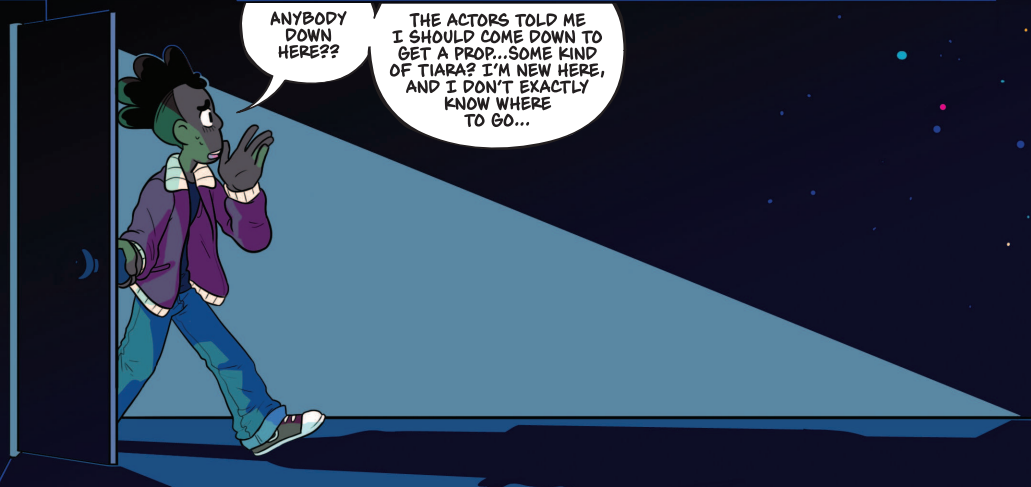
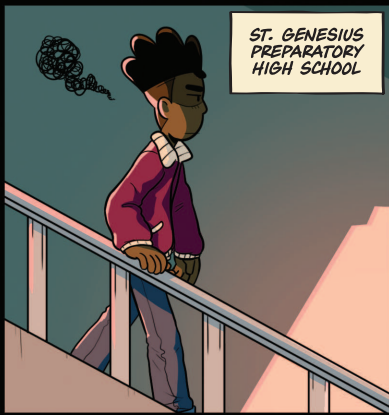
WRITTEN BY JAMES TYNION IV

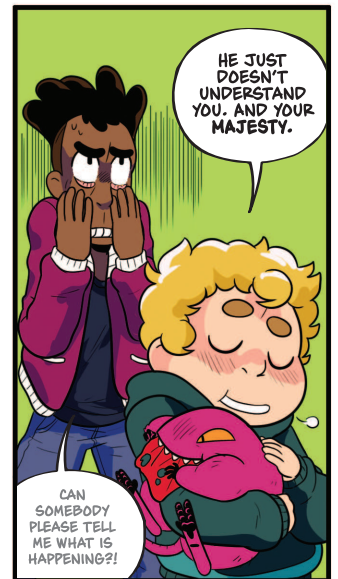
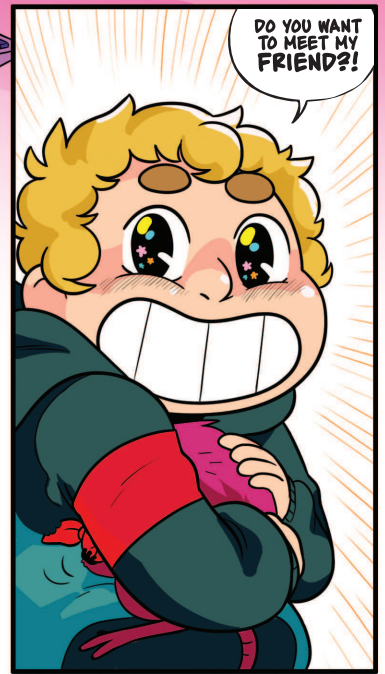
ILLUSTRATED BY RIAN SYGH

COLORS BY WALTER BAIAMONTE

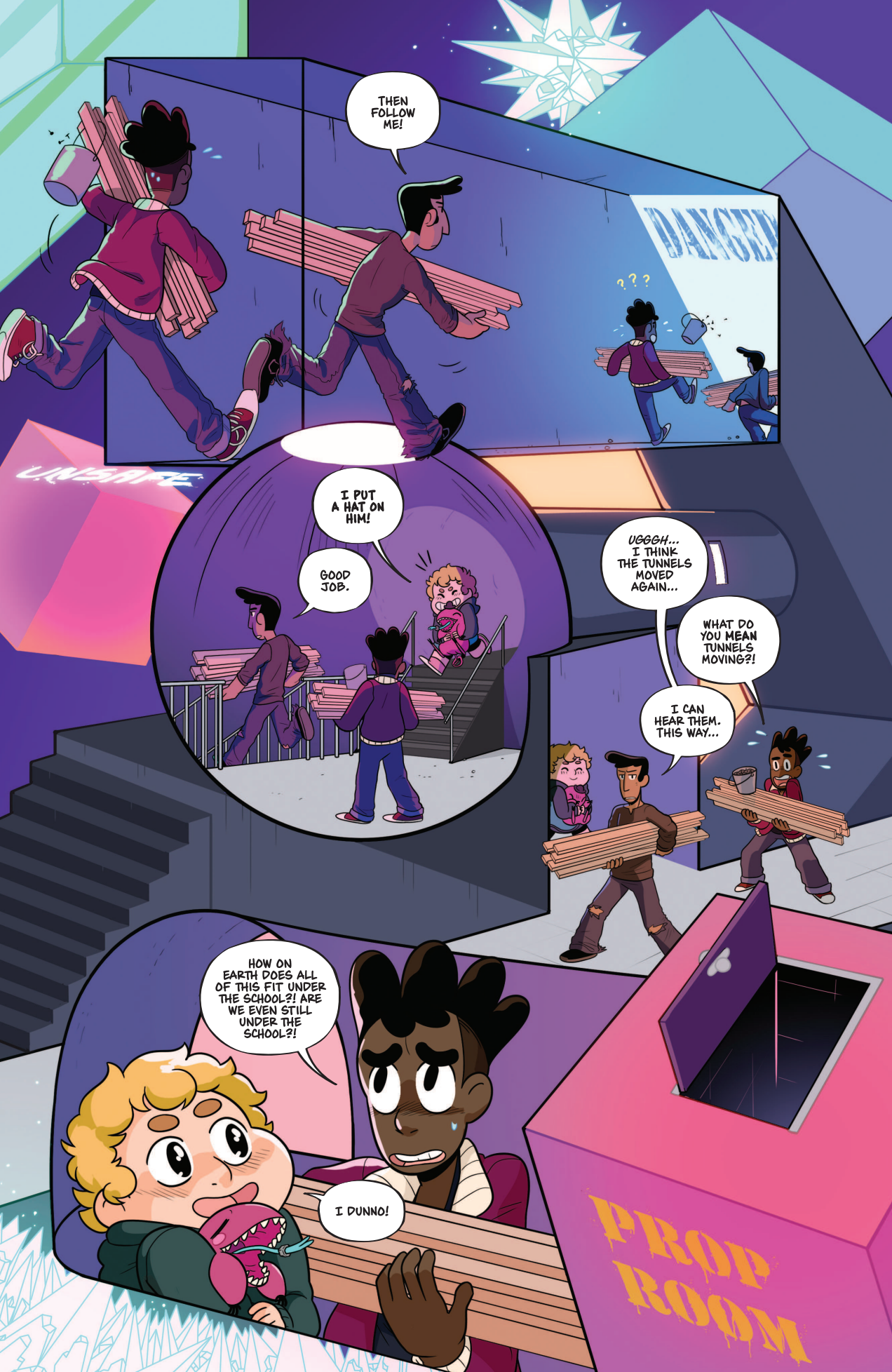
LETTERED BY JIM CAMPBELL

ISSUE ONE IN STORES AUGUST 2016









THEN FOLLOW ME!

???

I PUT A HAT ON HIM!
GOOD JOB.

UGGGH... I THINK THE TUNNELS MOVED AGAIN...

WHAT DO YOU MEAN TUNNELS MOVING?!

I CAN HEAR THEM. THIS WAY...

HOW ON EARTH DOES ALL OF THIS FIT UNDER THE SCHOOL?! ARE WE EVEN STILL UNDER THE SCHOOL?!

I DUNNO!

PROP ROOM



WHAT THE HECK?!

ABOUT TIME, YOU GUYS.

LIKE I SAID. WE'RE GOING TO DIE.

I WILL PROTECT YOU, FRIENDO!

TO BE CONTINUED IN **THE BACKSTAGERS #1** IN STORES AUGUST 2016